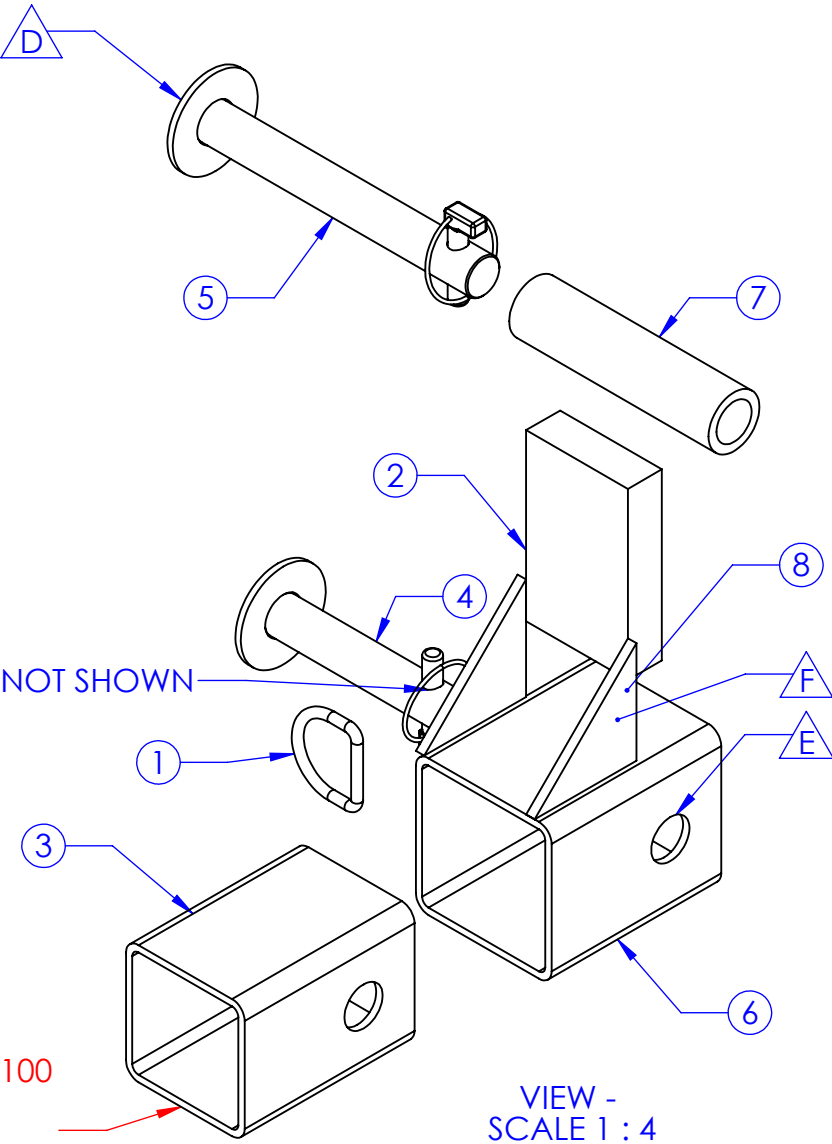
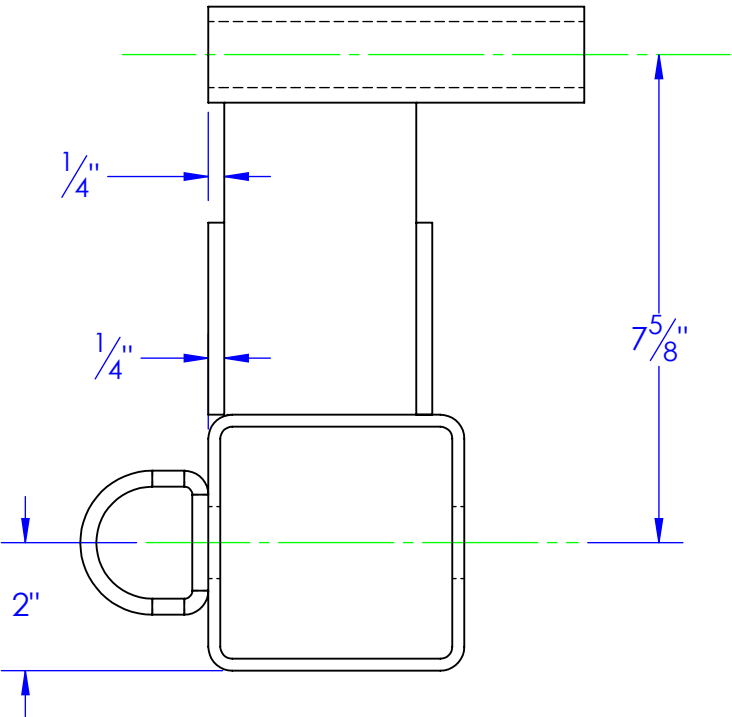
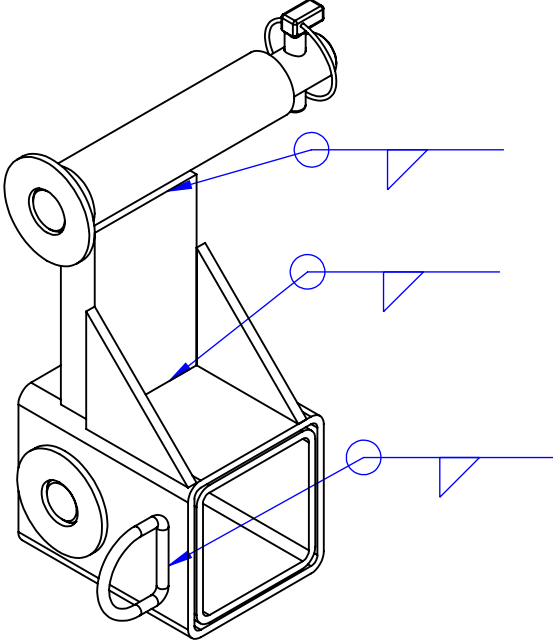
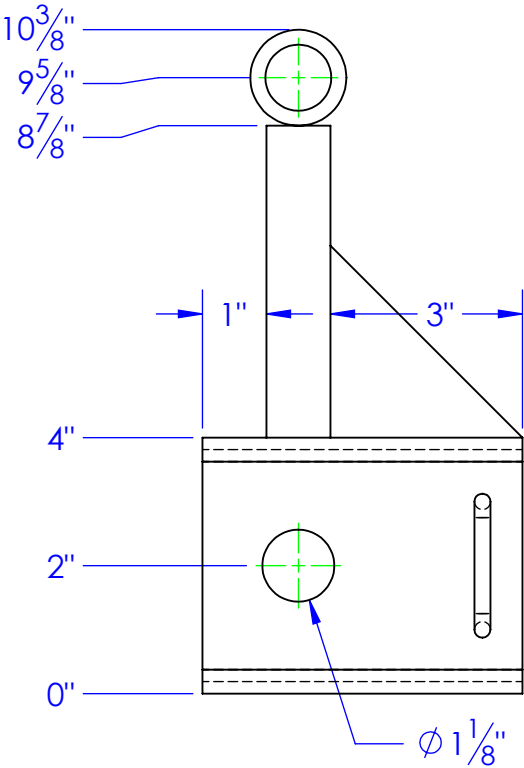
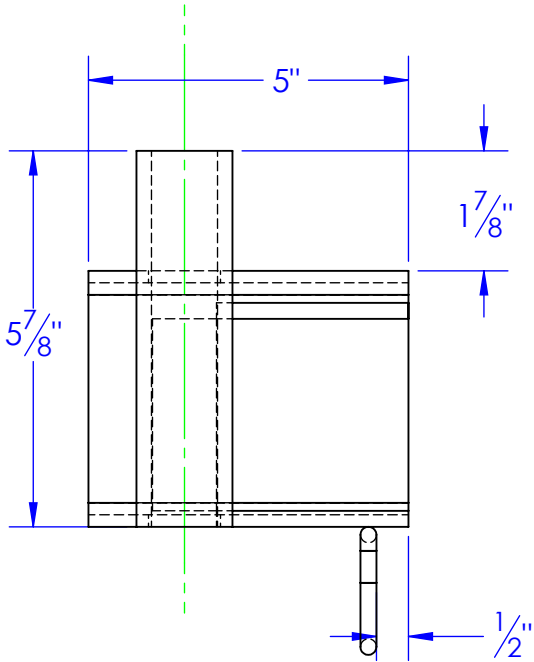


| ITEM NO. | PART NUMBER                 | DESCRIPTION                 | MATERIAL          | Default/ QTY. |
|----------|-----------------------------|-----------------------------|-------------------|---------------|
| 1        | HD-RD 2 x .25               | RING DEE 2x1/4              | PURCHASED         | 1             |
| 2        | FL 1 x 3 L 4.875            | LENGTH: 4-7/8"              | FL 1" x 3"        | 1             |
| 3        | FP-PHD1-15                  | ADAPTER SLEEVE 3" TO 3-1/2" | ST-3-1/2x3/16     | 1             |
| 4        | RE-PN-C1x525                | PIN, CON, 5-1/4"            |                   | 1             |
| 5        | RE-PN-C1X800                | PIN, CONNECTING 8"          |                   | 1             |
| 6        | ST-4 x .1875 L 5            | ADAPTER SLEEVE 3" TO 3-1/2" | ST-4 x 3/16       | 1             |
| 7        | ST-MT 1.500 x 1.032 L 5.875 | LENGTH: 5-7/8"              | CDBW 1.5" x 1.032 | 1             |
| 8        | FP-PHD-GUSSET               | GUSSET POST HOLE DIGGER     | 1/4" HRS          | 2             |

|      | REVISIONS  |            |          |
|------|--|------------|----------|
| REV. | DESCRIPTION  | DATE       | APPROVED |
| A    | 1-1/64 WAS 1-9/64  | 2/6/97     | CED      |
| B    | ITEM 1 WAS 3-1/2x3/16, ITEM 3 LENGTH WAS 5-1/8, 1/2 WAS 1/4, 2 WAS 1-3/4, ADDED P/N TP ACCOMODATE 150 SERIES BED | 9/9/98     | CED      |
| C    | REDRAWN & GIVEN DWG NO.  | 08/07/06   | CJA      |
| D    | UPDATED BOM TO MATCH PEACH TREE  | 4/4/2012   |          |
| E    | UPDATED HOLE Ø TO 1-1/8 FROM 1-1/64"   | 1/8/2013   |          |
| F    | ADD GUSSETS  | 12/13/2016 |          |



|   |  |  |                          |   |  |                             |
|---|--|--|--------------------------|---|--|-----------------------------|
| <div>PROPRIETARY AND CONFIDENTIAL</div> <div>THE INFORMATION CONTAINED IN THIS DRAWING IS THE SOLE PROPERTY OF &lt;INSERT COMPANY NAME HERE&gt;. ANY REPRODUCTION IN PART OR AS A WHOLE WITHOUT THE WRITTEN PERMISSION OF &lt;INSERT COMPANY NAME HERE&gt; IS PROHIBITED.</div> | <div>TOLERANCES:</div> <div>FRACTIONAL:±1/16</div> <div>ANGULAR: MACH± 1    BEND ±</div> <div>TWO PLACE DECIMAL    ±010</div> <div>THREE PLACE DECIMAL    ±005</div> | <div>ASM #</div> <div></div>                       | <div>PH-PHD1-9-150</div> | <div><div>TRIPLE C</div><div>INC.</div></div> |  |                             |
|   | <div>MATERIAL</div> <div></div>  | <div>150 ARM MOUNT<br/>ADAPTER HYDRA<br/>PHD</div> |                          | <div>SIZE</div> <div>B</div>                  | <div>DWG. NO.</div> <div>60-1105 F</div> | <div>REV</div> <div>F</div> |
|   | <div>DO NOT SCALE DRAWING</div>  |  |                          | <div>SCALE: 1:3</div>                         | <div>WEIGHT: 16.75</div>                 | <div>SHEET 1 OF 1</div>     |
|   |  |  |                          |   |  |                             |